



**Laboratory Services, Failure Analysis
and
Security Evaluation
for the microelectronics industry**

SiVenture provides a range of services:

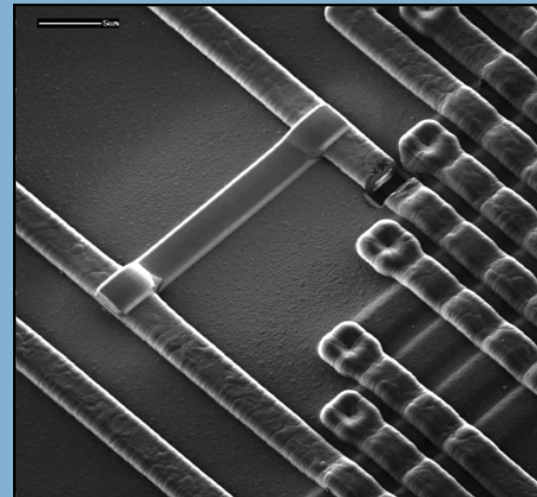
➤ Lab services:

- Deprocessing
- Circuit edit
- Failure analysis
- FIB/SEM



➤ Security Evaluation:

- Common Criteria
- CESG Commercial Product Assurance
- Security Training



Market Geography

➤ **Global Market**

- **UK**
- **Mainland Europe**
- **Japan**
- **USA**
- **Turkey**
- **Israel**



Client Base

- **Software product vendors**
- **System integrators**
- **Service providers**
- **Chip Manufacturers and Designers**
 - **Silicon chip makers; smartcard os developers; terminal makers**
 - **Silicon designers (fabless)**
- **CLEFs & ITSEFs & test labs**
 - **UK, Japan, Spain**
- **Consultants**
- **Smart Card Issuers and Implementers**
- **Government**
- **Internal NDS Clients**



Simon Milford
Head of SiVenture

Unit 6, Cordwallis Park, Clivemont Road, Maidenhead
Berkshire, SL6 7BU, United Kingdom

T: +44 (0) 1628 651 366 F: +44 (0) 1628 651 365

M: +44 (0) 7881 918 199 E: simon.milford@siventure.com

www.siventure.com